



SIMPLE LIFE



SIMPLE LIFE



Southern Street, Reynolds Place, Worsley, Manchester

£1,275 Per Month

Situated next to the designated Local Nature Reserve Blackleach Country Park in Hill Top, Worsley, Reynolds Place is a wonderful development of 148 properties. From 1 bedroom apartments to 4 bedroom detached houses, you're sure to find the perfect fit for your family.

The Dee is a beautiful four bedroom modern home, built over two levels.

Downstairs there is a large living room, WC and hallway leading to the rear of the property where you will find a stunning kitchen/dining area equipped with integrated kitchen appliances and contemporary units. The kitchen/dining area also benefits from French windows which take you into your own private rear garden.

Upstairs you will find a family sized bathroom including a stylish white bathroom suite and four bedrooms – two doubles and two singles. The master bedroom benefits from built-in wardrobes and an en-suite bathroom fitted with its own shower and cubicle.

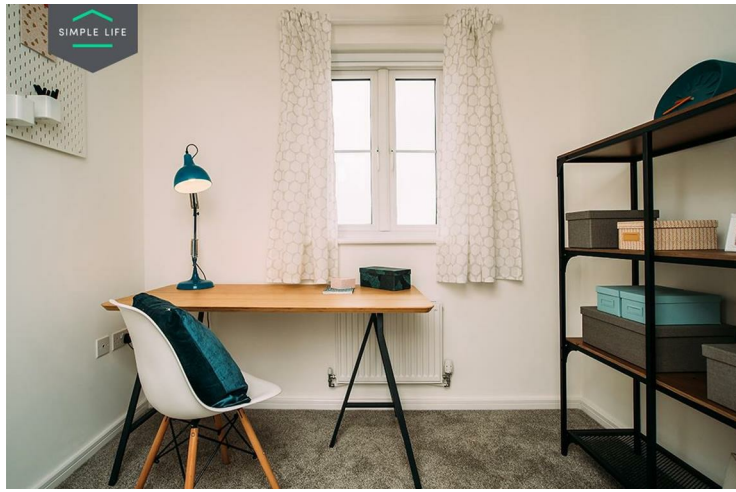
Within easy reach of the M61 and a mile of Walkden Train station, commuting to the wider North West is straight forward from the development. There are 32 Ofsted rating 'Good' or 'Outstanding' Primary or Secondary schools within 3 miles too, so all family members are catered for.

Walkden itself is an easy walk or drive, with a good highstreet local services and restaurants, including a Tesco Extra, Medial Centre, library and the Walkden Town Centre shopping area.

To visit the site, use postcode M28 3QN, with the development on the corner of Worsley Road North and Southern Street.

Deposit: £1470
Holding deposit: £290
Unfurnished
Council Tax: D
Available 22nd January 2026





Key Features

- Private driveway
- Fitted wardrobes to master bedroom
- Fridge freezer
- Oven and hob
- Dark ash style worktops
- Security alarm system
- Dishwasher
- Washing/drying machine
- Light wash wood effect flooring
- Modern, white kitchen units

Location

